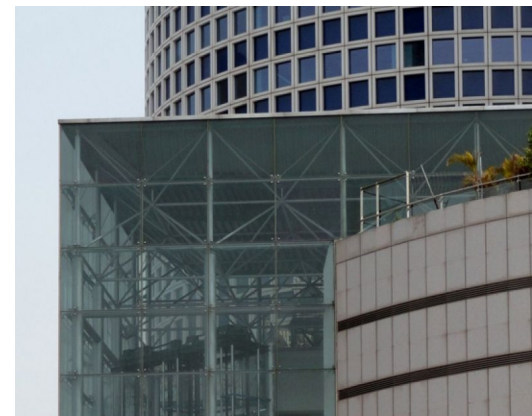
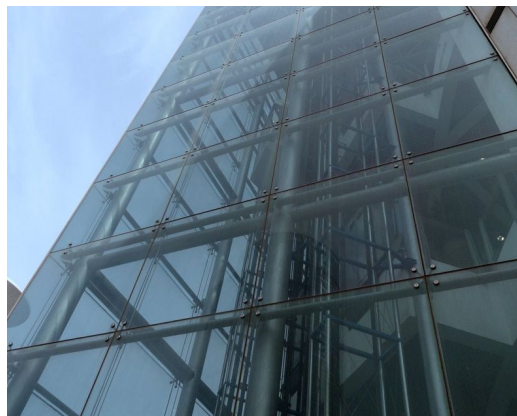
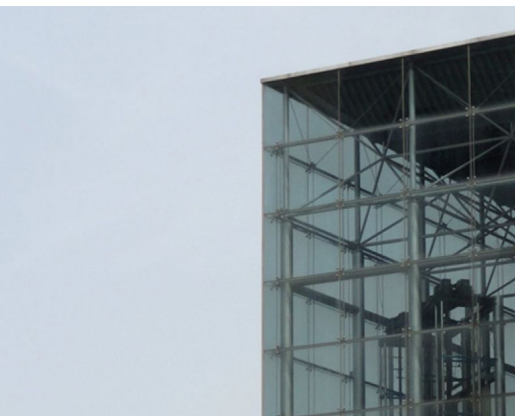
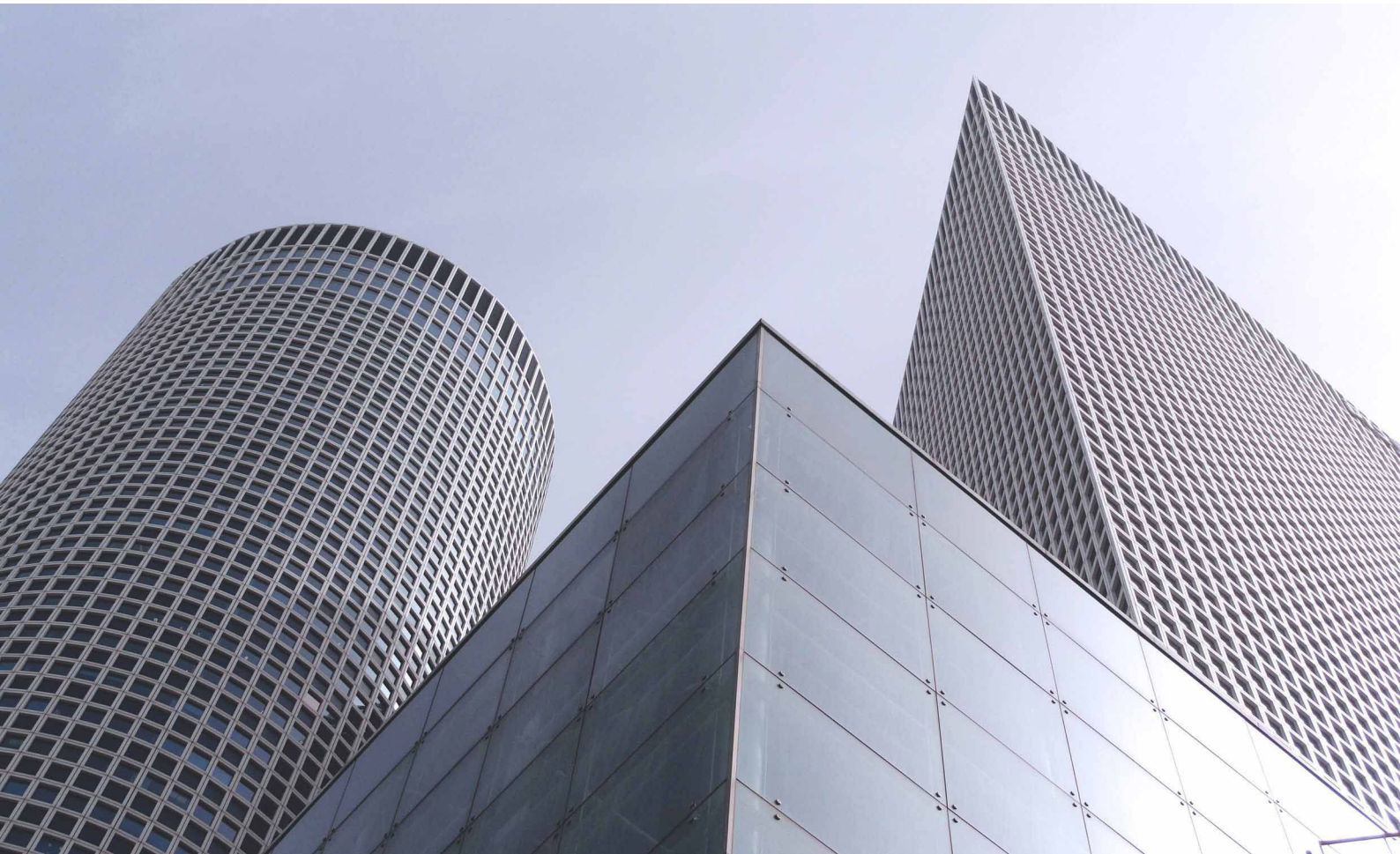


# AZRIELI CENTER

Architect  
Client  
Location  
Year

MYS ARCHITECTS  
CANIT HASHALOM INVESTMENTS LTD.  
ISRAEL, TEL AVIV  
1999

04422



Centrally situated along the main highway of Tel Aviv is the 300,000 sq.m. Azrieli Center. It is one of the most notable projects in Israel designed by Moore, Yaski, Sivan Architects. The complex contains three office towers, a hotel and a large scale shopping center. Octatube realized the circular and square-shaped structural glazed entrances to the mall.

The structure is based on steel circular main columns with a sub-structure by Octatube of elliptical beams with a stainless steel Quattro spider glass connection. The glass panels are coated for solar control.

**octatube**