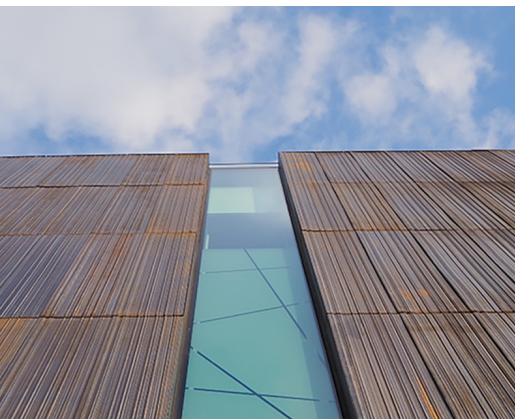


# TOTTENHAM HOTSPUR EXPERIENCE

Architect  
Client  
Location  
Year

POPULOUS  
TOTTENHAM HOTSPUR STADIUM LIMITED  
LONDON (UK)  
2019

07634



A 12 meter high glass box in which a gigantic LED screen hangs and a special dark brown cast iron facade that complements the pale yellow monumental Warmington House. The Tottenham Hotspur Experience forms the unique architectural gateway to the stadium. The box is very transparent. The panels (2 by 12 meters) are glued with silicone to continuous glass beams of 12 meters. The glass roof panels are sandwiched into the concrete roof edge. Minimalistic stainless steel elements at the top of the fins connect the glass.

The glass box harmonizes with the robust cast iron façade, designed as a layer that wraps around the building. The metal has a dark brown finish, that is evenly oxidized and transformed into a flawless surface with a lively character. Because of the exceptional loads, we paid close attention to the connections to the main structure of the building. With design optimizations, we saved tons of cast iron and emissions, minimized the number of molds, and saved on coatings.

**octatube**