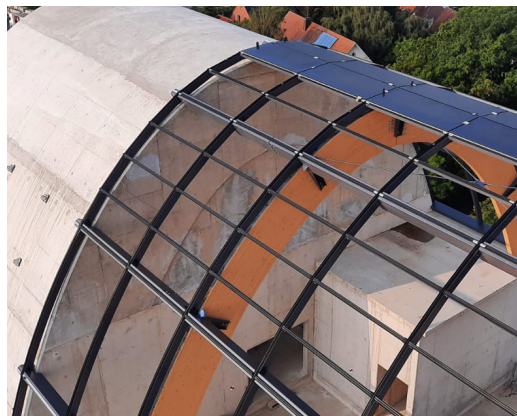


INNOVATIONZENTRUM SPARTHERM

Architect
Client
Location
Year

PODUFAL WIEHOFSKY
SPARTHERM
MASCHWEG MELLE DUITSLAND
2021

7815



Octatube was asked to develop and build the entire facade for Innovationszentrum Spartherm. The building is 40 metres high and consists of over 6500 m² of glass, with glass panels measuring 5.5 x 2.6 metres. Because of the gradient radius of the facade, many of the glass panels have a different radius. We chose to cold bend a large part of the glass in the work. We developed a special vacuum lifter to handle the large glass panels. This unique vacuum lifter can pick up the large panels,

but rotate them 90 degrees and bend them into the desired angle as well. As we work at a considerable height of 40 metres, this is quite the achievement. The building consists of a concrete construction. We place steel uprights and beams on top of which we then mount the glass. In the ridge of the roof, the curved structure is formed by laminated wooden trusses.

octatube