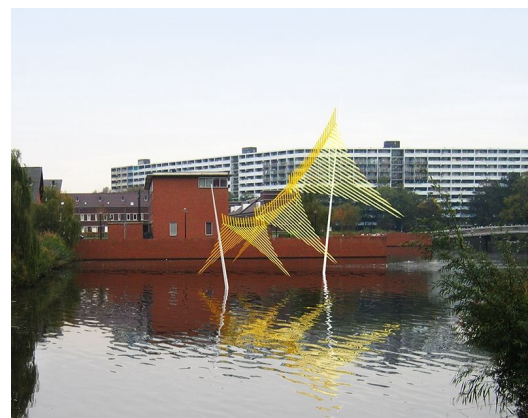
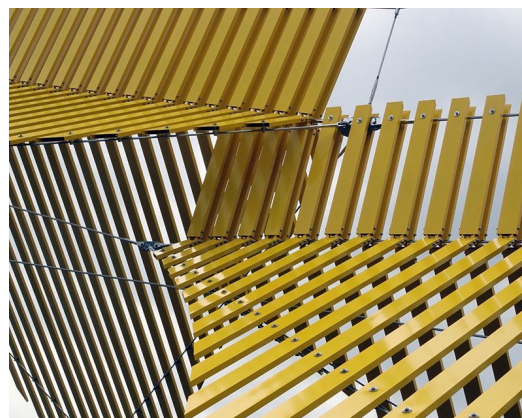


YELLOW WINGS

Architect
Client
Location
Year

MICK EEKHOUT & LOES VAN DER HORST
STADSDEEL AMSTERDAM ZUIDOOST
NETHERLANDS, AMSTERDAM
2015

06821



In accordance with the previous design of the Bijlmobiel, one short and one long pylon were set up in the pond. In between the pylons four suspended cables were attached. To these cables overlapping faces were fixed and inter-connected, creating a vivid ensemble of wings. The faces consist of 100 millimeter parallel aluminium strips.