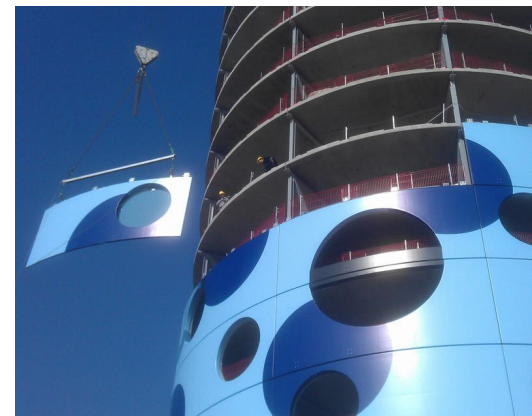
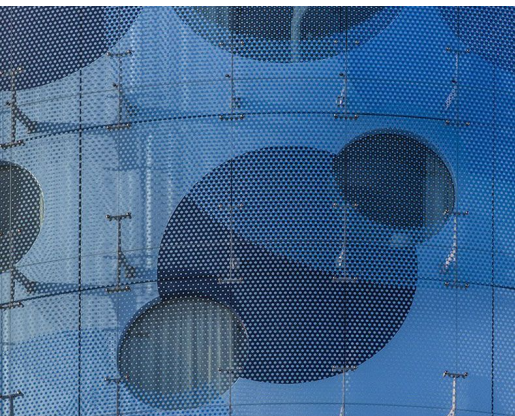


FLETCHER A2 HOTEL

Architect
Client
Location
Year

BENTHEM & CROUWEL ARCHITECTEN
M. CARANSA B.V.
NETHERLANDS, AMSTERDAM
2012

06556



Octatube has been involved in the trajectory of this project from an early stage onwards. By also taking up the engineering and realization of the inner façade, Octatube was able to develop an integrated double façade system. The structural and building physical challenges that were caused by suspending the glass façade on the light weight inner façade were cleared in one swing by replacing the traditional wooden structure with composite GRP elements (Glass Reinforced Plastic).

In the past, a lot of experience with this type of material has been gained at other projects. This project took the use of composites one step further by making the GRP element also structural. The hotel has been designed by Benthem & Crouwel Architects. The whole, consisting of a glass façade with digital print, a structural inner façade, a glass entrance and a restaurant give a spectacular view from the highway - both day and night -with an overlapping blue dot pattern.

octatube