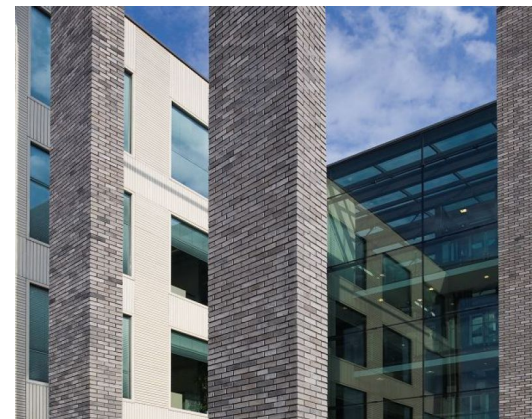
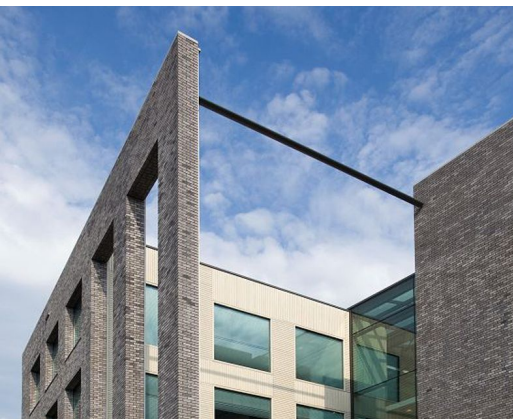


OFFICE ENDRESS + HAUSER

Architect
Client
Location
Year

ARCHITEKTENKOMBINATIE BOS HOFMAN
BK BOUW
NETHERLANDS, NAARDEN
2011

06588



The new office of Endress+Hauser (a company for measuring instruments and process engineering) in Naarden is resulting from the complete revitalization of an existing and outdated building. In their design, the ArchitectenKombinatie has shifted two office-volumes relative to each other, creating two clear entrances and an atrium filled with natural light. Octatube has developed four glass facades; two narrow facades of 2,4 meters in width and two facades of 6,5 meters.

The glass panels of the narrow facades are supported against wind loading by means of horizontal steel strips that are situated behind the glass seams. The outer edges of the glass are supported by means of structural metal sheeting. The glass panels of the larger facade are supported against wind loading by means of horizontal elliptical profiles. Vertical tension rods take up the dead load of the glass panels to the roof edge or intermediate floors.

octatube