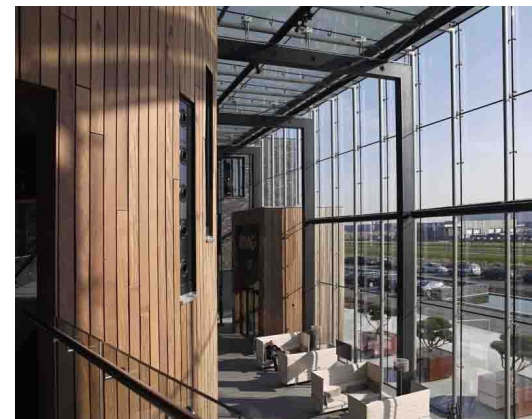
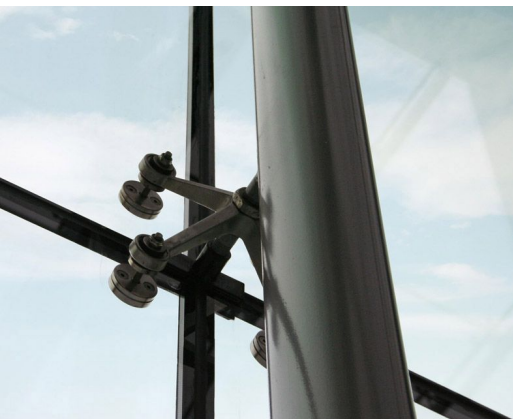


DMG BUILDING

Architect
Client
Location
Year

VAN AKEN ARCHITECTEN
VAN WIJNEN - HEERKENS VAN BAVEL
NETHERLANDS, WAALWIJK
2008

06169



The interior space of the DMG atrium is a generous entrance area and informal meeting place that seems to have an open connection to the exterior. This large connecting atrium between two offices is designed as Quattro façade with a bonded point-fixed connection of the glass. In the atrium are five large rectangular portals. From these portals, air is blown into the atrium. On top of the portals round tubes are placed that support elliptical shaped secondary steel portals.

To keep an optimal transparency the outside corners are completely kept free from the supporting structure. The glass panels consist of extra-clear glass with a special developed coating. For the roof a screening with stripe-pattern is chosen.