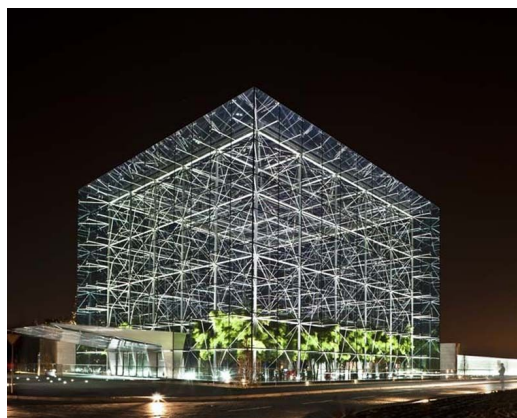


# GLASS CUBE

Architect  
Client  
Location  
Year

ALFONSO MILANES  
BANCO SANTANDER  
SPAIN, MADRID  
2009

06160



The glass cube (30x30x21,4 meters) is part of the headquarters of Banco Santander in Madrid. Bank president Botin did everything to realize something impressive. The glass is the entrance building and because of its height and size, it is a landmark in the landscape and a calling card for the bank. To give the building skin and the structure an impression of lightness and openness, the glass facades have a distance of 2,5 meters to the main steel structure.

All structural forces are transferred to the main structure of the building and the foundation in a very efficient and elegant manner. This has led to a spatial steel structure in which all the forces are recognizable. The structure has been carried out in high-end stainless steel and the glass consists of the newest solar and transparent coating. Together with the architect, the starting point has always been to pursue maximum transparency and the highest possible quality.

**octatube**