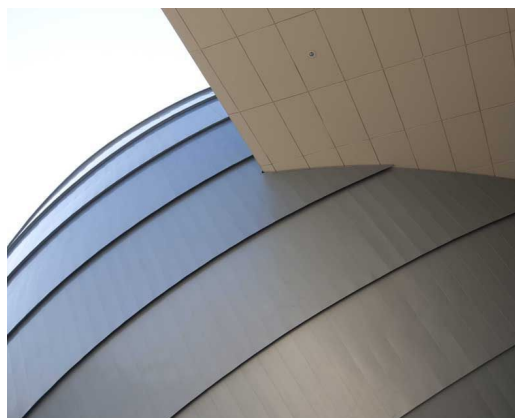
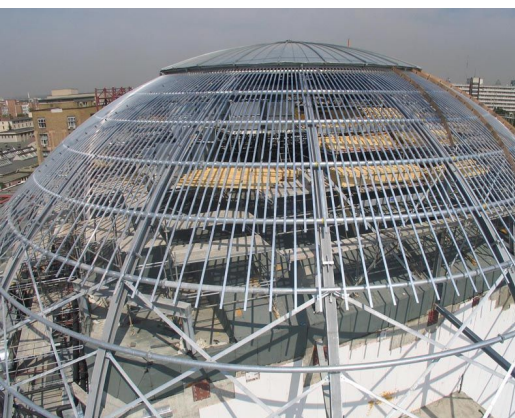


IMAX THEATER

Architect
Client
Location
Year

MYS ARCHITECTS
DANYA CEBUS ROMANA SRL
ROEMENIĂ, BOEKAREST
2009

06227



In the beginning of November 2009 the Dutch Design & Build company Octatube has completed a sphere that is totally clad with zinc panels. The impressive structural shape houses the new IMAX Theatre for the new AFI Palace Cotroceni in Bucharest. The design of the sphere is developed together with the architectural office MYS from Tel Aviv and is based on 24 twisted strips that are placed on a perfectly twisted sphere.

The resulting zinc sphere has a diameter of 42 meters and a surface of over 4.000 m², which makes it the biggest sphere ever constructed in the world so far. Because of the high quality standards Octatube has chosen to work only with Dutch subcontractors, to realize a very precise construction of the job within a short time span of only four months.

octatube