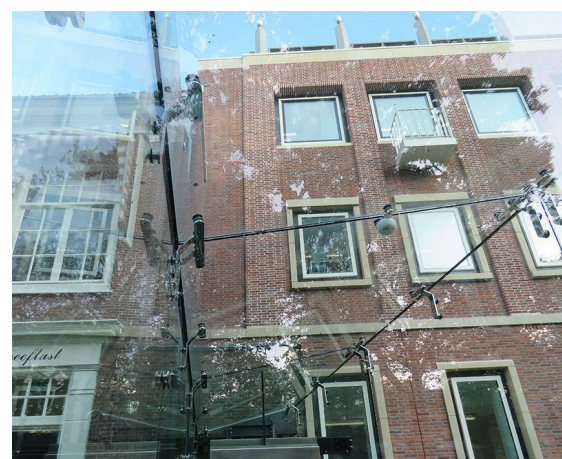


# STATEHOUSE NOORD-HOLLAND

Architect  
Client  
Location  
Year

CLAUS EN KAAAN ARCHITECTEN  
HEIJMANS  
NETHERLANDS, HAARLEM  
2014

04670



The entrance of Noord-Holland's State House (also known as the Dreefgebouw) parking garage is marked by a full glass entrance. This glass structure is feature by laminated glass panels that are interconnected by means of high-end duplex stainless steel nodes. Some glass units act as a portal, while the entrance facade itself functions as a three-hinged glass arch.

**octatube**