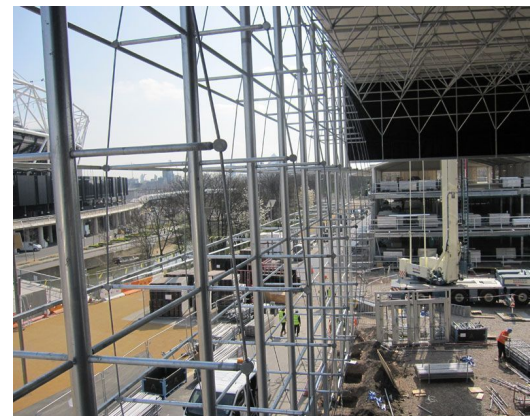
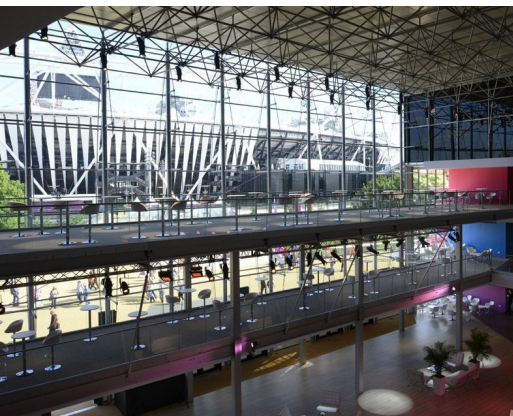


# PRESTIGE TICKETING

Architect  
Client  
Location  
Year

MICK EEKHOUT  
NEPTUNES B.V.  
UNITED KINGDOM, LONDON  
2012

06735



For the London Olympic Games a temporary structure has been realized on behalf of Neptunus B.V. The hospitality facility of Prestige Ticketing (PTL) is situated 80 meters opposite the Olympic Stadium. The site consists of three interconnected structures: two large tents are dominated by an impressive glass volume in the middle, which is also the entrance. The construction of this entire demountable building under stringent security procedures was only one of the challenges.

To reflect the image of the Olympic Stadium as much as possible, the glass has a special coating. The structural and frameless glazing allowed for a stunning view of the Olympic Park not impeded for guests inside. In keeping with the sustainable legacy of the Olympic Games, the structure has been completely disassembled after the Paralympics. The building parts are stocked by Neptunus and are ready for a new customer.

**octatube**