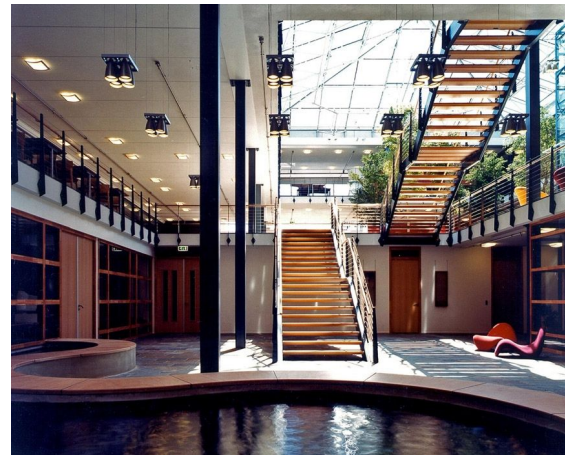


ORANJEWOUD

Architect
Client
Location
Year

OVING ARCHITEKTEN
ORANJEWOUD
NETHERLANDS, HEERENVEN
1999

05154



The glass pyramid skylight covers the head office of Oranjewoud Engineering in Heerenveen. Oving architects designed a functional office that harmoniously blends into its surroundings, after winning the competition. The atrium is a lively area with trees where the pyramid skylight provides the interior including the basement with natural light. The use of bespoke steel structure in combination with the structural glazed roof results in a highly transparent and slender construction.

octatube